

This Booklet will get you to know more about "Beta-glucan"

The miracle of

β "Beta-glucan"
from Black Yeast



This Booklet will get you to know more about “Beta-glucan”

The miracle of

β “Beta-glucan” from Black Yeast



List of Content

	Page
<i>Chapter 1 What is Beta-glucan?</i>	5
<i>Chapter 2 Human Immune System</i>	8
<i>Chapter 3 Cancer and Immune System</i>	14
<i>Chapter 4 Miracle of "Beta-glucan"</i>	16
How Beta-glucan from Black Yeast works with Diseases	
- Cancer	18
- Diabetes	19
- Allergy/ Inflammation	20
- Chronic Kidney Disease/ Hepatitis	21
- Rheumatism/ Fever	22
- GERD/ Trichinosis	23
- Constipation	24
<i>Chapter 5 Beta-glucan and Complexion</i>	25
<i>Chapter 6 Testimonial from Users</i>	
- Hepatitis	27
- Paralysis and Diabetes	28
- Paralysis, Diabetes, Heart Disease, HBP	30
- Lung Cancer	31
- Muscle Pain and Finger Lock	33
- Diabetes	34
- Allergy and Rheumatism/Bone Pain	35
- Allergic Rhinitis	36
<i>12 Rules to Prevent Cancer</i>	37
<i>Epilogue</i>	38
<i>References</i>	40

The miracle of “Beta-glucan” from Black Yeast

Translated from Findings of Aureobasidium Cultivation Substance on Health (in Japanese)

1st Publication April 20, 2006

Publication Business Friend Co., Ltd. 5-23-11 Utsukushigaoka, Aoba-Ku, Yokohama-City, Kanagawa-Ken 225-0052

Publisher **Orchid Printing & Premium**
2/26 Moo 1 Watcharapon Rd., Saimai District,
Bangkok 10220 Thailand
Tel : +66 (0) 2991 9606
E-mail : orchid_pp2009@hotmail.com

No part of this booklet is allowed for duplication without prior permission

Price: USD 5.00

MIRACLE OF BETA-GLUCAN

Human Immune System Functioning Adjustment

The substance found from the cultivation of black yeast *Aureobasidium* is a gel-like substance, mainly consisting of water and Beta-glucan. Nowadays “Beta-glucan” has become so well-known in medical society among developed countries such as the United States. It has been found very useful to human health. Stimulating human immune system, for instance, anti-aging, revitalizing, gaining normal body hormone balance, and body immune system function adjustment are parts of the benefits from beta-glucan. In addition, Beta-glucan is also an initiator for cancer prevention.

Beta-glucan from cultivated black yeast *Aureobasidium* is 100% natural, therefore it can be consumed worry-free. It has been verified for safety from the Japanese Ministry of Public Health, with reference to Ministry of Public Health Announcement number 120, that it is a natural substance with Beta-glucan structure type 1,3 – 1,6 as its main component.

This booklet is a compilation of the benefits of Beta-glucan from the cultivation of Black Yeast *Aureobasidium*, with direct experiences of Beta-glucan consumers who show miraculous effects.

CHAPTER 1

WHAT IS BETA-GLUCAN?

A Discovery of Aureobasidium Microorganism

In 1975 a gel-like substance was found during a drink production. The analysis showed that it came from Aureobasidium Yeast, which produces polysaccharide around its internal cell wall.

A number of studies of Aureobasidium Yeast and this gel-like substance showed that, if Aureobasidium Yeast is cultivated in an environment enriched with minerals, sucrose, bran, and vitamin, the yeast would produce a large amount of gel-like substance with concentrated Beta-glucan.

I'm "Beta Glucan"

The Secret of the Miraculous Power

The cultivation of Black Yeast enables us to gain gel-like substance enriched with Beta-glucan. The element is now well-spoken of among medical society.

Glucan is a dietary fiber or polysaccharide, which comes from a large number of glucose molecules woven together. The cultivation of Aureobasidium Black Yeast brings Beta 1,3 – 1,6 Glucan. The number 1,3 – 1,6 identifies the molecule structure of Beta-glucan.





Basic Structure of Beta-Glucan 1,3 - 1,6

By having such a structure, Beta 1,3 – 1,6 Glucan is then the secret of the miraculous power, that empowers human antibody. It is also capable of preventing a chemical reaction called “oxidation” a reaction that Oxygen forms a bond with other elements.

Extracted Glucan from Mushroom

Beta-glucan is a created on the cell wall of microorganisms, can also be found in other kinds of mushrooms such as Agaricus, Blazei, Murill, including Ganoderma Lucidum. The glucan found is a short-line glucose structure. The most popular type of Beta-glucan in Japan is found in mushrooms. Even though we cook and eat the mushroom, our body cannot absorb the substance directly. That is because there is still contaminant and other substances that our bodies reject to absorb. And the extraction from mushroom cannot be reliable of the production quality and the standard.



Furthermore, products that obviously are comprised of Beta-glucan are rare. It makes it even harder for consumers to check for clarification. Recently there are dietary supplement products with Beta-glucan, extracted from mushroom, such as Schizophyllum Commune. Whereas in extracting

Beta-glucan, the use of chemicals or scientific procedures are unavoidable, vital elements for body absorption is missing. And the quality of the outcomes is not as satisfactory as promised, due to the fact that it loses natural balance components.

100% Natural Aureobasidium Yeast Cultivation Substance

Beta-glucan from Black Yeast is a natural gelatin (semi-liquid), made by Black Yeast, and consists of Beta-glucan as its internal component. The essence in extracting Beta-glucan is high temperature sterilization. No chemicals or scientific procedures to help extracting the substance, the outcome is 100% natural Beta-glucan in gel form. The extracted Beta-glucan is mixed with Phosphorus, Potassium, Magnesium, Calcium, Vitamin C, Oleic Acid, and linoleic Acid. With all the mixture, Beta-glucan is absorbed into our body more easily, and rapidly effective.



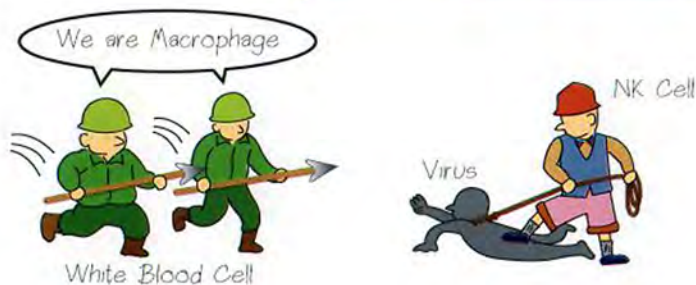
Aureobasidium Black Yeast

CHAPTER 2

HUMAN IMMUNE SYSTEM

Our bodies are protected with immune system that protects us from diseases and viruses, including our self healing. Immune system can be divided into 2 types: innate or natural immunity, and acquired immunity. Our innate immunity are Natural Killer Cell (NK Cell) and Macrophage Cell. When contaminants are found, Macrophage cell in leukocytes is the first cell to eliminate the contaminant by engulfing it. NK Cell, on the other hand, will monitor and detect to target cell, working with Macrophage cell to eliminate contaminants.

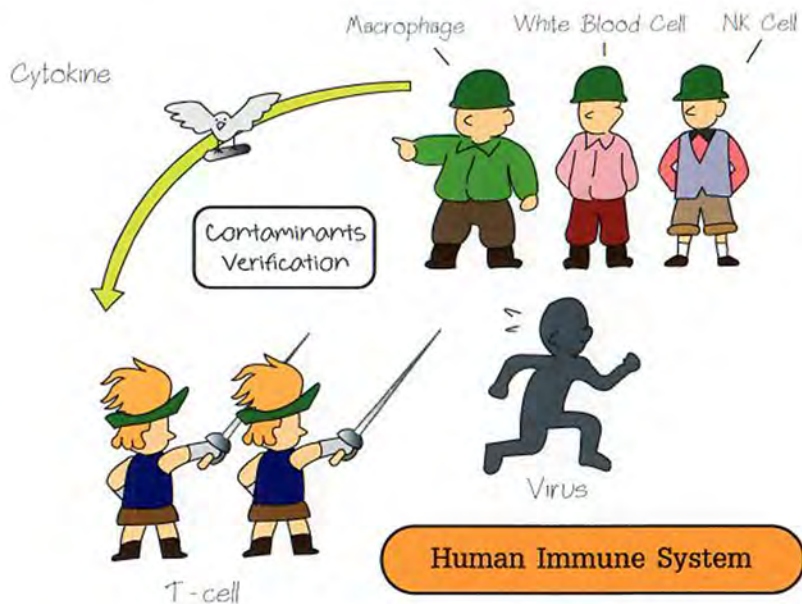
Functioning of the Immune System



Macrophage Cell will detect the location of contaminant by pouring cytokine around, and spreading to T-cell in lymph glands. T-cell will then produce weapons that can terminate that particular contaminant. Acquired immunity is the immune system that is initiated from the disease when it has been ceased.

Cause of Immune System Deficiency

Immune system is a multilevel security system that protects our body from being infected from diseases. When we neglect to pay attention to routine health practice, such as insufficient sleep, smoking, alcoholic drinking, insufficient exercise, impractical nutritional diet, chemical consumption, including stress, the immune system may be malfunctioning and/or declining.



Body Change Due to Malfunctioning of Antibody

When our body is infected by allergen, for example, animal hair, droppings, bodies of fleas, fungus, and pollen, in the state of malfunctioning antibody, it will be overproduced and will start to strike our parts of body as well as the contaminant. This is called "Allergy", such as allergy to skin and complexion, asthma, and allergy to pollen.

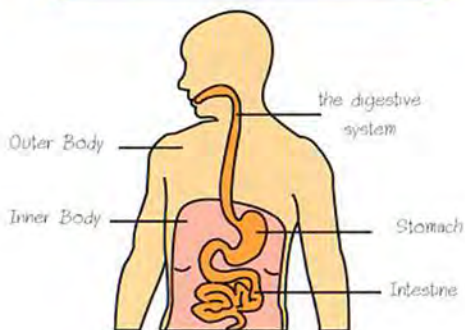
When allergen enters into our body, an overreaction of antibody to allergen causes too much antibody cell, which causes running nose, asthma, rash, and so on.

Intestine Functions as Substance Separator and Antibody Command Control Centre

Additionally, our body is equipped with intruder protection system for detecting contaminants from entering into our body. Our digestive system is yet regarded as external organism. The internal one is, however, cell.

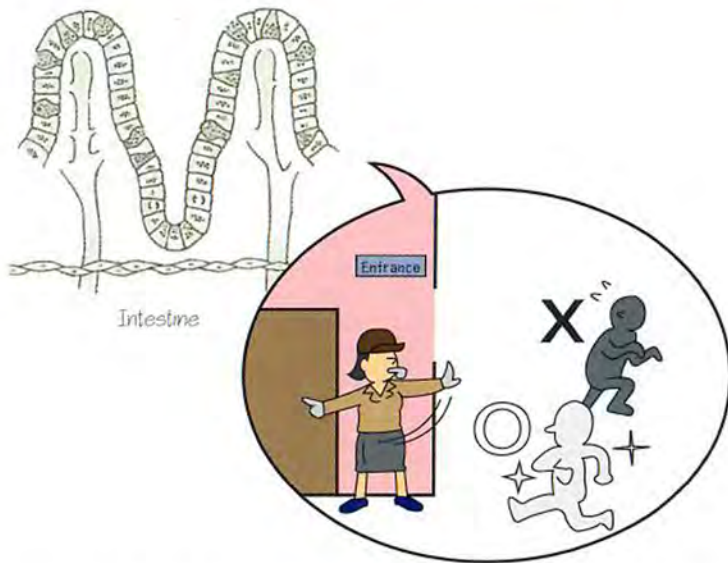
Therefore, in order to gain access from outside into our body, substances and contaminants have to be through the organ that functions as nutrient absorber – the digestive system, which is the intestine. When food and water are absorbed through intestine along with toxin and disease, it impacts on our health problem. Intestine is therefore detached with organs that can analyze substances that our body needs or does not need, including separating toxin from nutrients. In case the absorption is mistaken, it will alarm antibody system to function. That organ is called plasma membrane on the surface of intestine.

Inner and Outer Body Structure



Intestine functions as the entrance to our body – cell level. The surface of intestine looks like sea anemone, which is covered by fluffy hair and moves very slowly. In every 1 minute, the movement made in intestine is found at 1-2 centimeters. At the top of the hair locates a large amount of lymph glands, in which they operate antibody to function, and prepare themselves for intruders at all time.

Intestine roles as Inspector



The study shows that on the surface of intestine it is found to be a mass of cells that produce antibody stimulator. It is therefore defined that intestine is the center of antibody command. It is also found that the nerve in intestine is very swift, receiving and sending the reception to nerve system and gland system, and at the same time discriminating the incoming substance whether it is useful or harmful to our body.

Beta-glucan Helps Stimulating Antigen in Intestine

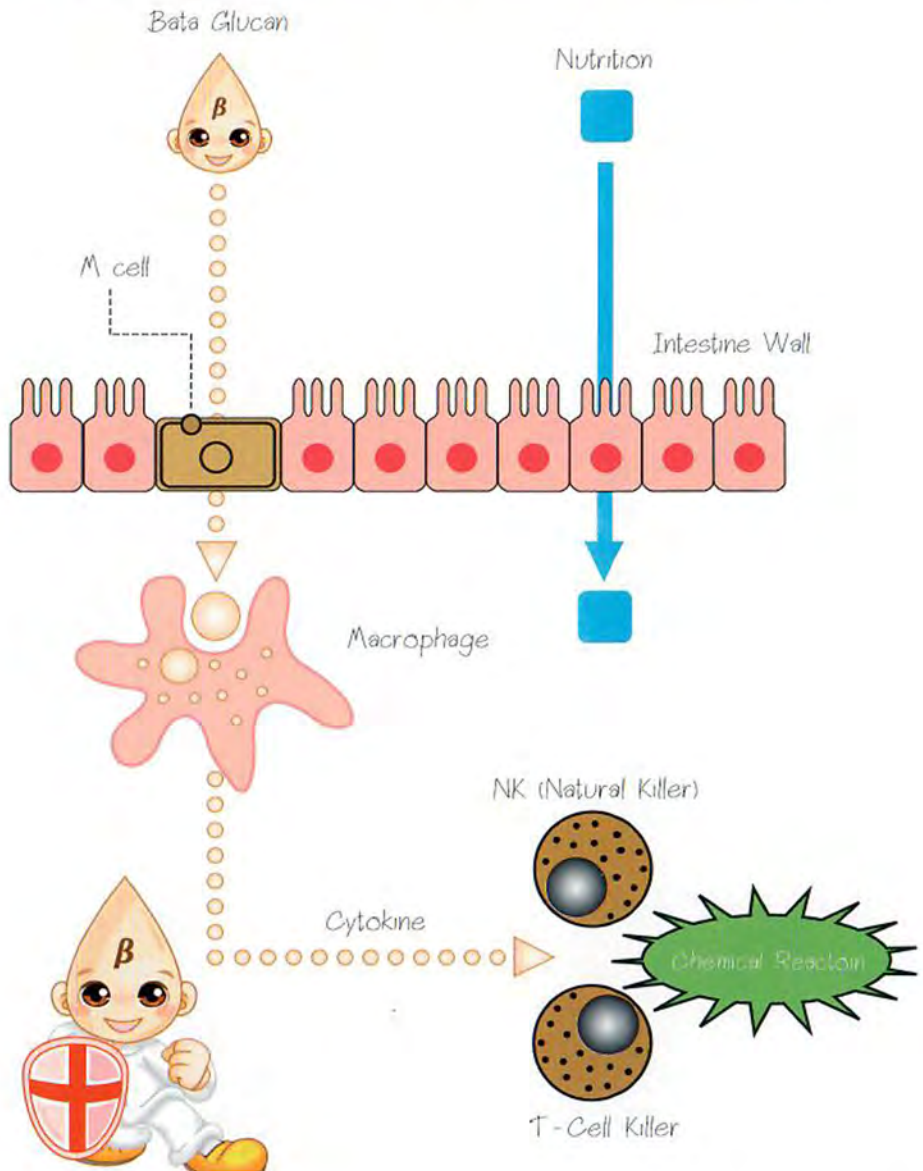
The surface of intestine is covered with sticky mucilage (membrane). It consists of polysaccharide that helps discriminating the incoming substances whether they are useful or harmful to our body. Beta-glucan will attach itself to Macrophage cell and NK Cell, functioning as a switch of antibody system while they are in the intestine wall, in order that our body can absorb nutrients into cells.

Beta-glucan Absorption and Antigen Transmission

The food that we have will be though several dissecting organs, such as, chewing inside our mouth, and mashing into the smallest molecule inside our stomach. These smallest molecules will be digested by the topside surface of intestine.

However, digestive organs cannot alone downsize Beta-glucan to be absorbable. It is therefore transported till it reaches intestine by attaching itself with Peyer's Patch, which functions as a separator of large substances inside intestine. When anything is found, it will send command to antibody system to restrain it. Macrophage Cell at the end of Peyer's Patch will collect Beta-glucan. It will therefore enhance the function of Macrophage Cell by giving Cytokine, along with stimulating other antibody cells.

Peyer's Patch and Immune System



CHAPTER 3

CANCER AND IMMUNE SYSTEM

Decreasing Antibody Empowers Risks to Cancer

Human body consists of more than 60 trillion cells. And new cells are generated every day. With any affective factors, for instance, Oxygen, Chemicals, or Ultraviolet ray, the cell DNA is destroyed. When fault cells are created, they become “cancer cell”, in which it is found 5,000 – 6,000 cells per day in everyone. But with immune system, cancer cells and contaminating diseases are eliminated.

When antibody system is malfunctioning, and cancer cells could not be eliminated properly, they gather and become cancer (tumor). Cancer cells pour out some substance that can enable protein to melt other cells around it, and replace itself inside. It can also spread to other parts through blood and lymph vessels, which enable the cancer cells to grow very rapidly. On the other hand, when immune system functions properly, cancer cells growth and spread can be prevented.

Factors Which are Beneficial for Cancer

More patients with cancer are found increasing year after year. A major reason of a decrease of our immune system are our way of living, consumption of contaminated food, pollution, smoking and drinking, including a use of drugs and chemicals. They all have an impact on the weakness of antibody, or the malfunctioning of immune system, including the tendency to cancer.

The best way to prevent cancer begins with the adjustment to how we live our routine, especially eating food with antibody stimulating substance, such as vegetable and fiber.

Curing Cancer with Antibody

Options to cure cancer these days are operation, irradiation, and medication. chemotherapy These options, however, cannot completely eliminate cancer. An operation is to cut parts of our body where it causes illness, which may bring about side effects and scars from the operation. Irradiation affects the surrounding cells, which may cause more cancer. It also destroys leukocytes, decreasing antibody, thus enabling body infection. The most irritable disadvantage of using anti-cancer medication chemotherapy is that it causes more side-effects. Patients suffer from hair fall, nausea, and inability to eat or drink.

Recently it is found that our immune system is related to cancer cure and prevention. The trends in medical research has widely now therefore turned into paying effort to stimulation of antibody system. The main focus of the antibody system conditioner has now been “Beta-glucan”.



CHAPTER 4

MIRACLE OF “BETA-GLUCAN”

Antibody Stimulation

Beta-glucan from cultivated *Aureobasidium Black Yeast* has capability to stimulate body immune system very well. A group of researchers from Harvard University, USA, found that a connecting part on the frontal top surface of Macrophage Cell is a limb to attach hands of Beta-glucan. That is to say, on the frontal top surface of Macrophage Cell there are holes for Beta-glucan to lay its hook in. It is also reported that **when Beta 1,3 – 1,6 glucan is attached, Macrophage Cell works much more quickly. It is therefore stimulating antibody cell function.**

Furthermore, it is also found that Beta 1,3 – 1,6 glucan is the most effective substance in stimulating antibody cell functions. Lately many more studies on Beta 1,3 – 1,6 glucan have found that Beta-glucan is capable of raise the number of leukocyte, which has a great impact on immune system. It could also destroy Mutated leukocytes that cause Leukemia, an impact from anti-cancer medication. Moreover, it is also reported that consumers of Beta-glucan for more than 3 years have 3-5 times higher antibody system than those who do not consume Beta-glucan.

Patients of cancer, allergy, diabetes, and Immune Deficiency Syndrome are found better results after taking Beta-glucan. As Beta-glucan stimulates antibody system, it brings chain reactions to our body. Hormone functioning is also stimulated to elevate antibody system and organs functioning.

Appropriateness for Patients with the Following Symptoms

Beta-glucan 1,3 – 1,6 glucan from *Aureobasidium Black Yeast* has a special identity, which are gel-like form, easy for absorption, and helpful for patients of the following symptoms.

1. It is found helpful for cancer cure, such as, throat cancer, tongue cancer, lung cancer, intestine cancer, stomach cancer, liver cancer, gallbladder cancer, pancreas cancer, bladder cancer, prostate cancer, uterus cancer, ovary cancer, tumor, lymph gland cancer, leukemia, and skin cancer.

2. It reduces side-effects from anti-cancer medication.

3. It helps adjusting antibody system into normal state, relieving allergic symptoms such as rash from skin cancer, asthma, and allergy to pollen.

4. It reduces hair fall from stress.

5. It relieves joint pain and joint inflammation.

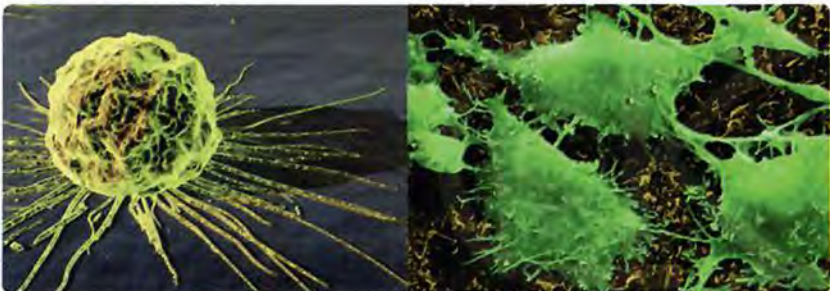
6. It reduces pain from Rheumatism.

7. It decreases symptoms of Diabetes.

8. It helps relieving lung inflammation.

9. It increases the power of wound healing.

10. It reduces constipation.



How Black Yeast Beta-glucan works on Cancer

Beta-glucan is an antibody adjusting conditioner, stimulating and elevating the effectiveness of immune system. When touched by intestine tissue, Beta-glucan will attach itself to NK Cell and Macrophage cell. It activates parasympathetic nerve system, impacting on the effectiveness of antibody cells or leukocytes. Furthermore, Beta-glucan also keeps Macrophage Cells alert, stimulating generation of Interferon and Interleukin properly. These two substances will pass on information among cells. Interferon is effective for cancer cell prohibition and tumor attack, aiming at destroying and killing cancer cell structure. It also reduces and prevents free radicals generation in our body (free radicals are substances that disturb growth and functions of normal cells).

The outcome of consuming Beta-glucan is that, therefore, cancer tumors will be downsized, and cancer cells will be less generated. When other cures to cancer such as surgical operation, irradiation, or chemotherapy, have side-effects on patients, taking Beta-glucan along with other cures will enable a better condition to taking cure and a faster recovery.



How Black Yeast Beta-glucan works on Diabetes

Insulin is a type of hormone that is related to metabolism. Sugar, protein, and fat in our body are generated by using Beta cells in pancreas. Diabetes happens when our body gains less insulin or the insulin is less efficient, causing metabolism to slow down or not function as properly as it should be. We become unusually thirsty and urinate in a larger mass than usual. It could result to a weight loss, and more complications could rise, which may endanger to death.

There are 2 types of Diabetes: 1) insulin injection required, and 2) no insulin injection required.

The first type of diabetes is because Beta cells in our body are destroyed by other cells, to which it results the inability of insulin generation or less insulin is generated. Our body thus needs a larger amount of insulin by injection, to prevent blood from being too acidic.

This type of diabetes is relevant to antibody system problem. When Beta-glucan is consumed to keep antibody work properly, Beta cells will not be destroyed. Insulin generation is thus functioning properly, along with Beta cell generation, diabetes symptoms are found lower.

The second type of diabetes is because our pancreas is able to generate insulin, but may not be sufficient to defeat insulin resistance. In a long term, pancreas cells are worn off, and eventually unable to generate enough insulin even in the state of starvation. This phase the patient will need insulin injection to keep insulin level balanced, like the diabetes type one. Beta-glucan is a fiber that slows down sugar level from being released into blood vessels. When sugar is absorbed into blood vessel slowly, the level of insulin need is

reduced. It can also readjust our behavior to food control and exercise, which will raise the effectiveness of insulin.

How Black Yeast Beta-glucan works on Allergy and Asthma

The number of allergy patients is increasing year after year. This is due to the fact that human antibody reacts too rapidly to allergens, which can be contaminated by injection, consumption, breathing, or touching. It brings rash on skin and complexion. When it is scratched, the complexion gets further infected, as same as that of Asthma and Allergy to Carpel.

Beta-glucan helps leveling the malfunctioning antibody and prohibiting the creation of antibody. When Beta-glucan is absorbed through intestinal wall, it enables the neural command system and the antibody cells to eliminate germs and contaminants. It also prevents the leukocytes from functioning too hard, and prohibits free radicals from being released to damage the body cells. These therefore lessen the fault responses and revitalize antibody at the same time. In addition, Beta-glucan in gel form is highly effective in provision of moisture, lessening dry skin problems and stimulating complexion cell regeneration. It can also be applied to wound areas to lessen the irritation, rash, and dermatitis.

How Black Yeast Beta-glucan works on Inflammation and Infection

One of the qualifications of Beta-glucan is germ sterilization. It helps preventing the infection and prohibiting inflammation. Being in a gel form, it can contain a large amount of water and moist when applying to wounds. It is also highly effective in provision of moisture, therefore preventing the

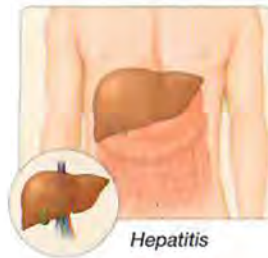
wounds to get dry, lessening inflammation, irritation, and infection, and the wounds are healed more rapidly.

How Black Yeast Beta-glucan works on Chronic Kidney Disease

Chronic Kidney Disease patients are to follow instruction strictly to reduce risks of chronic kidney disease symptoms. Beta-glucan enables the patients to gain more control of their physical condition to be prepared for cure and medication. In the case of patients with high level of sugar in blood vessel, artery is frozen and blocked. Blood is then unable to be sent to kidney tissue. Beta-glucan can lower the sugar level in blood vessel, and also strengthen our antibody cells to be alert. Lower infection in urinary tract will be found. Our body can then terminate germs and disease more rapidly, reducing risks of infection in other organs.



Chronic Kidney Disease



Hepatitis

How Black Yeast Beta-glucan works on Hepatitis

Hepatitis is a disease that is formed by many factors, such as infection from virus, alcohol, medication, the patient's antibody, and so on. In case of hepatitis virus, Beta-glucan will stimulate antibody cells to detect virus, thus

enabling lower level of kidney cells to be destroyed, and prohibiting hepatitis insurgency. Also, in the case of self antibody, Beta-glucan will enable antibody cells to function more properly, and revitalize kidney cells as well.

How Black Yeast Beta-glucan works on Rheumatism

Rheumatism is a common name for a group of joint pain, especially muscles or joints that are used for movement. This includes Lupus, Joint Inflammation, Gout, and Rheumatoid Arthritis, which is a chronic muscle and joint pain that is related to antibody system malfunction. When the inflammation is activated, anti-collagen cells in blood vessels will rise, causing the symptoms to be more severe.

Beta-glucan is there to readjust the antibody cell function to work properly by prohibiting antibody system (leukocytes) to generate too many antibody cells, in which it destroy tissues, bone, and joints. Moreover, Beta-glucan also prevents or reduces infections of some diseases such as viruses, that it stabilizes and relieves rheumatoid arthritis, including inflammation to other parts of the body.

How Black Yeast Beta-glucan works on Fever

Beta-glucan stimulates and strengthens antibody cells (leukocytes) to be alert and prepared for functioning at all time. When virus is through our eyes, nostrils, mouth, or our touching, leukocytes will detect it and kill the virus, preventing it from incubation to inflame. Taking Beta-glucan will strengthen our antibody cells, and thus prevent and reduce chances of getting caught of fever.

How Black Yeast Beta-glucan works on GERD

Beta-glucan can reduce the condition of GERD by detecting gastric acid in our stomach from refluxing upward to digestive vessel. It also prohibits the growth of *H. pylori*, which is resistant to acidic environment in our stomach. The virus leads to gastric inflammation, peptic ulcers, digestive vessel cancer, and gastric cancer. For patients who are currently taking PPIs medications, it is highly recommended to take Beta-glucan after taking other medications 1-2 hours. This is to avoid attachment formation between PPIs and Beta-glucan, and to allow the medication to be fully effective.



GERD



Trichinosis

How Black Yeast Beta-glucan works on Trichinosis

When trichinosis enters into our body, it will incubate and multiply its number, and later will intoxicate to our body. Beta-glucan is there to stimulate leukocytes to detect toxin and diseases that enter into our body, preventing it from spreading to other parts of body like, for example, blood vessels. Nonetheless, consumption of clean, nutritious, and freshly cooked food is the best way to avoid our health from trichinosis.

How Black Yeast Beta-glucan works on Constipation

Beta-glucan has the same quality as fructose and fiber. Fructose assists in prohibition of bacteria growth in intestine, and multiplication of probiotic such as Lactobacillus, for a better balance in digestive vessel.

Beta-glucan is a water-soluble fiber, detaching itself to molecule or water, sugar, fat, or any free radicals in our body. When absorbed through intestine cell wall, it will stimulate intestinal function and excretory system. It also absorbs toxin inside stomach. With its structure that is capable of holding water inside, it increases water level in excretory system, making excrement easier (in a comparison between men and women, men tend to have more proportion of water in our body than women, and with less water in excretory system, women find it more difficult for excrement).

When our stomach cannot digest food fiber, it becomes food for bacteria inside, which produces lactic acid and prohibits the growth of the bacteria. Beta-glucan will block fat and bile with its structure (which is created from cholesterol inside our body). Beta-glucan then capacitates the use of cholesterol to produce bile, enabling a lower level of cholesterol in our body.

Taking Black Yeast Beta-glucan will enable a better function of our constipation system. When it is balanced, toxin or bad substances will be eliminated from the inside out, and the multiplication of bacteria in intestine will be prohibited. And since our stomach and intestine are stimulated into functioning properly and systematically, our antibody system is elevated eventually.

CHAPTER 5

BETA-GLUCAN AND COMPLEXION

Why our Skin and Complexion Wrinkle

In every generation, women all wish to retain their beauty with them. The components of good complexion are as follow.

- Smooth, light-colored, and moisturized skin
- Flexible and not rough when touched
- Good blood circulation, enabling the look of healthy, lively and bright skin

The skin of infants is the best match of the above qualifications. Wrinkles come at certain age. Skin of infants is very moist and flexible, because it contains an amount of water. When we get older, the level of water inside our body decreases, including collagen fiber and elastin is less flexible and frozen, causing less flexibility and more wrinkles, and slack. When water in our skin decreases, our skin gets dried and darkened. These are all what will happen to everyone when we get older, though it varies from person to person.

The causes of skin problems are numerous – stress, food culture change, insufficient rest, too much exposure to ultraviolet ray, unclean environment, and so on.

Therefore, to prevent those from happening, it is better to protect our skin from dryness, ultraviolet ray, and stress, which is of vital importance. And in order to stimulate new cell generation, essential skin food consumption and sufficient rest are a must.

Beta-glucan Renews your Skin to 10 Years Younger

Do you know “skin age”? Skin age is the fact that the youth of skin for each person differs from one another when we get middle age, which may be up to 10 years.

With the qualification of being water-soluble of Beta-glucan, it can contain water in its structure, enabling skin to be moist when used for skin care. It also protects our skin from dryness. When it works with blood cells beneath our skin, it helps protecting skin bacterial infection, and skin cancer from too much exposure to ultraviolet ray (UV). It also decreases melanin generation, which enables skin darkening and spots. And even though melanin is normally produced, Beta-glucan helps preventing the production of free radical from being oxidized, thus preventing skin darkening. It also enables melanin to scatter around, lessening freckles and skin discoloration. Furthermore, Beta-glucan also prevents collagen fiber and elastin from being frozen and stimulates to function properly, enabling skin to be more flexible. This will revitalize skin to generate new cells. It is thus suitable for middle-aged women very much.

Assuring Quality and Safety of Beta-glucan Consumption

The fact that Beta-glucan is 100% extracted from natural sources proves that it will not irritate skin, even can be used with sensitive skin. It is regarded as a substance that is very strong in destroying malfunctioning cells, and is very sensitive in skin care and health care.

CHAPTER 6

TESTIMONIAL FROM USERS.



When Symptoms from Hepatitis are Gone, Other Diseases Disappear.

Mrs. Boonkueng Nonthajitr (51 years old)

Nakhon Rachasima Province

Hepatitis

Mrs. Boonkueng Nonthajitr, or Grandma Boonkueng, is a 51 year old farmer. She told us that she used to be unhealthy. Recently she had been hospitalized and diagnosed to have hepatitis and intestine inflammation. Most of the time she had pain and sometimes she threw up blood. She had spent a number of visits to the hospital.

After getting back from the hospital, she felt better. But without medication, the symptoms came back. With her routine jobs, she became exhausted easily, could not finish one single job without taking a rest. When other symptoms were gone, her swollen stomach remained, especially when she skipped medication. She felt it was going to get worse, until one day she felt unconscious during her work. She woke up again and found herself in the hospital. None of her family thought she could make it. They even made a reservation to the funeral preparation.

After a while when she was introduced from a neighbor about the extraordinary quality of “Black Yeast Beta-glucan”, she felt there was nothing

left she had to lose, so she made a research on it and found it could revive her from hepatitis. So she began taking “Black Yeast Beta-glucan”. During the first dosages she felt lighter. Within the third package her swollen stomach was completely gone, reviving her appetite. She therefore continues using it and found that her strength from being easily tired and exhausted was back. She felt she had a better eyesight, and her other sicknesses altogether disappeared. In the eyes of all her family that she would not make it alive, she survives. “It is all because of Black Yeast Beta-glucan, that keeps me alive”, she said. She felt “Beta-glucan” keeps her away from all sicknesses and diseases. It keeps her alive to live and work the job she loves happily.



After Being Paralyzed for More Than 4 Years, He Comes back to Walking and Living by Himself

Mr. Duan Manowan (75 years old)

Khon Kaen Province

Paralysis and Diabetes

His wife and niece told us that Mr. Duan is diagnosed with High Blood Pressure, Diabetes that needs 12 injections per day, Kidney Stones more than 5 years, and Paralysis since 2006, which made him unable to walk by himself. He also had an operation to remove part of his intestine. And he has been diagnosed with other symptoms of his age, for instance, diffuse eyesight and deaf. They both commented that he could barely help himself, even holding a spoon to his mouth was difficult for him.

At the beginning of June 2009 his conditions were worsening. He was hospitalized urgently. Until June 10th, 2009 his doctor admitted that he could rest at home, and everyone should be prepared for him unforeseen fortune. Everyone at home was desperate and grievous, but trying to accept that as a fact. Even his funeral was under preparation. At that time a friend of his daughter introduced “Black Yeast Beta-glucan” to him. When there would be no harm trying it, his wife agreed. At that very night he felt too tight in his chest and had a fever. He was sent to the hospital immediately. There they found that he excreted a large amount of black excrement.

In the next morning he was released home, with his better condition. Since then he continues taking Beta-glucan from 1 package per day, until now he is taking 3 packages per day. His diseases and sicknesses are found recovering, from the level of sugar in blood vessel at 400 ml. per deciliter, it reduces to 120, which is considered a normal rate. His blood pressure and excretion is becoming normal, and his emotional tide is getting better, including his memory. He is now able to have meal and take a shower by himself. He is also practicing how to walk again. Everyone hopes he is getting better at it every day.

Since the first day that he found “Beta-glucan”, he found his last choice of his food supplement. Everyone of his family now have faith in its quality, and now that they are all “family members of Black Yeast Beta-glucan”.



Blood Pressure and Diabetes Comes back to Normal, Walk again

Mrs. Niam Chaiyabhum (75 years old)

Nakhon Srithammarat Province Paralysis, Diabetes, Heart Disease, and High Blood Pressure

Mrs. Niam has been diagnosed with High Blood Pressure, Diabetes, Heart Disease, and Left-side Paralysis for more than 5 years. She and her daughter said that she has been with so many diseases. Many years ago she was found unconscious, and since then she had to visit the hospital every now and then. Recently she could barely walk normally. Her left knee downward is swollen and darkened, with no feelings. Her doctor said she could not recover from it, no matter what medication she was taking.

Her daughter then found “Black Yeast Beta-glucan”, so she introduced it to her mother. Within the first pack her leg became less darkened, almost at the normal color. She so decided to double up the dosage to 2 packages each time, 3 times a day. Since then even she does not take normal medication for almost a month, no serious symptoms were found. Once she had a tight chest, she took “Beta-glucan” and it was gone instantly. When she visited her doctor for a monthly check-up, her doctor was surprised by her progressing recovery. Her blood pressure and diabetes were found at normal rate, and her leg has been recovering well. People keep asking her what she is taking to make such a progress.

She said nowadays after taking “Black Yeast Beta-glucan” she could get up and walk, and do house chores. If it was not for “Beta-glucan”, she would not survive.



Serious Condition of Lung Cancer Reduces Minute by Minute

Mr. Nut Chanchuang (61 years old)

Nakhon Srithammarat Province

Lung Cancer

Professor Nut Chanchuang works as a faculty member at one college in the south of Thailand. One year ago he found that he felt hot in this throat at night, and no matter what medication he took, the symptom remained. He then was certain it was Lung Cancer. Despite the fact that he was delicate in his eating, no drinking, no smoking, he found it must run in family genes. He lost his sister from Intestinal Cancer, and his 2 brothers were found with Prostate Cancer, but they are both recovered now.

Since the diagnosis he suffers so much from its symptoms and unable to eat anything. “For more than 5 months that I could not eat anything, only chewing it, swallowing its juice, and spit it out”. One of his serious symptoms is that he could not breathe during sleep, and he could not lie on his back. The maximum sleep was 2 hours per night. His doctor said the cancer was spreading from the right lung to the left one, and it tended to reach the heart.

He left Nakhon Srithammarat on the 27th of the month and began his treatment at Songkla University Hospital. He suggested the doctor that he preferred to take medications rather than irradiation or chemotherapy, which he found more painful and suffering, and he believed no survival was found from that therapy. His doctor refused, he then chose to take “alternative medication”. His doctor then told him that “within 3 months you will be sent in

an ambulance to me, and until then I cannot help you". That night he could not sleep at all. He received phone calls from 2 doctors that night, saying that they have found a cure to his disease, and to get himself there immediately. The next morning he hurried back to Nakhon Srithammarat to find the doctor. He was told that they were all lost on finding the right cause of the disease. It was not from infection, but from physical deterioration.

From the day he knew "Black Yeast Beta-glucan", it did not appeal his interest at all, but he tempted to try it. From the first glass of drinking it, he found that his suffering breathing in the last 5 months was thorough like it was drilled out. He could breathe deeper and deeper gradually, and it was appealing to breathe more air inside the lung. Since his first trial with "Black Yeast Beta-glucan" he thought he would give it a try, and that he may not die from this disease the very day.

He found that his saliva was so much sticky before. After taking "Beta-glucan" he found that sweetness from eating a piece of apple remained, and quenched all his appetite to eat his breakfast. Since then he began his normal diet. He was finally determined that "he could survive from it".

For him, "no matter how much money you have, when life is over, it is over. People nowadays seem to be attracted to money more than their own lives. They will have to get to their own point to understand that Beta-glucan is the right solution to health problem". He was not certain if he could make it day by day, if without taking Beta-glucan now.



I am Willing to Pay THB50,000 if it Could Take Away the Pain From me

Sergeant Major Chakrit Niha (47 years old)

Nakhon Srithammarat Province

Muscle Pain and Finger Lock

Mr. Chakrit Niha is working as a soldier for the department of engineering. He has been suffering from High Blood Pressure, Muscle Pain, and Finger Lock ever since. On February 11th, 1999, he fainted and became unconscious. He was hospitalized for 3 days, and since then he had to visit the hospital every now and then.

He was diagnosed that it was because there was insufficient amount of artery to the heart, making him getting faint, hands and feet cold and numb, and finger locked as well. Many times at night he had to untie his locked fingers with the other hand. He went to see the doctor for several times, but what he was prescribed was only painkillers. For the past 10 years he had to fight with pain. The pain he had began from his waist, up to his spine and occipital, making him feel like he was hit. It made him dizzy and blurred his sight. He had to sit before wearing trousers or shoes. He used to joke with friends that if THB50,000 could take away his pain, he would no doubt buy it right away.

In July 2009, his wife introduced him to “Black Yeast Beta-glucon”. He did not believe in its quality at first, as he used to take other food supplements before and they did not bring any improvement. With his wife’s support, he initially tried 2 packages per day. The third day he felt very tight in his chest and could not breathe in. But on the fifth day he finally found its merit, as

all the pain that he used to have was all gone. He could bend down to wear trousers without any muscle pain. He felt lighter and more comfortable, like a good sign.

He truly believes in “Black Yeast Beta-glucan”, that he trusts it with his little child to take it. His trust is not just 100% on it, but 101%.



Sugar Level in Blood Vessel Reduces from 280 ml. per Deciliter to 120

Mrs. Lampuan Waiyawit (62 years old)

Nakhonsawan Province

Diabetes

Mrs. Lampuan was been diagnosed with diabetes for more than 7 years. She feels numb around her hands and feet, exhaust and gets faint sometimes. She has taken diabetes medication to control sugar level in blood artery ever since, which was around 200 ml. per deciliter.

In May 2009, she was introduced to “Black Yeast Beta-glucan”. She did not believe in it at first appearance. When she tried it, she felt lighter. So she continued using it with the first few packages per day. After a few months she found the sugar level in blood vessel reduced from 280 to 120, so she agreed to continue with it, and the sugar level has been stabilized ever since.

She found that “Beta-glucan can truly help with Diabetes. I think I will keep taking it, because it is extremely helpful.”



Black Yeast Beta-glucan Does Truly Work on Both Allergy and Bone Pain

Miss Sarinya Kalakol (42 years old)

Nakhonsawan Province

Allergy and Bone Pain

Miss Sarinya was found allergy for more than 6 years. 9 years earlier she collapsed and broke bone pillow. She was suggested to have an operation, but she would like to try physical therapy and avoid carry heavy loads. She has found numb legs when standing too long, so she could not talk very steadily, and she also has pain deep down to the bone. Furthermore, she is also allergy to dust. It makes her sneeze and cough all day, with running nose at night. She had to take CPM medication 7-8 pills at a time.

She used to try many types of food supplements, but found very unsuccessful. It was good at the beginning, but later the pain would come back. One of her friends introduced her to “Black Yeast Beta-glucan” Like others, she did not believe it at first, but she does not want to suffer any longer, and it was nothing to lose but trial. Within a few first packages she felt better with both her muscle pain and the allergy. Now she does not need to take medication anymore, only when it rains or when she gets wet.

After having tried it herself, she found that “Black Yeast Beta-glucan” truly works on Allergy and bone pain. She was grateful to have found it.



Within 3 Months all Allergy Symptoms and Rash from Fever Disappeared

Mrs. Wannida Prommajan (65 years old)

Songkla Province

Allergy

Mrs. Wannida was found to have allergy after her successful treatment on her cervical cancer. The symptoms she had included headache, cough, sneeze, and runny nose. After a long trial on medication, she found it was not working.

Then she was introduced to “Black Yeast Beta-glucan” by her friend. Of course, she did not believe it at first, but was insisted to try. With the first pack of it, the symptoms of cough, sneeze, and runny nose began to evaporate. She so decided to continue the dosage. Within 3 months all allergy symptoms were altogether gone.

When she found herself better, she then stopped taking “Beta-glucan”. At that time the spread of Shikunbunya Fever was everywhere. She had a very high fever. Then she thought of “Beta-glucan”, so she took it again. The very next morning the fever was gone, but the rash remained. She then applied it on her skin, along with taking it. In that evening the rash disappeared and the fever was entirely gone. Since then she has had no fever.

12 RULES TO PREVENT CANCER

In order to prevent cancer from being infected more and more, the National Council of Cancer recommended suggestions to prevent cancer, which is called “12 Rules to Prevent Cancer”. They are as below.

Food Awareness

1. Intake of sufficient and balanced Nutrition
2. Intake of 5 Essential Group of Food
3. Avoid Having too much food, and Lower Fat Food Consumption
4. Drink at minimal whenever needed, or Avoid entirely when possible
5. Intake Food with appropriate amount of Vitamin and Fiber
6. Avoid too Salty, and too hot Food
7. Avoid burned food
8. Beware of Musty Food or expired Food

Other Precautions

9. No Smoking
10. Not too much exposure to the sun
11. Gain Regular Exercise
12. Keep Your Body Clean

Epilogue

DINING ADJUSTMENT

The initial thing to adjust when thinking about cancer prevention is dining. The food should consist of sufficient vitamin A, C, E, and Beta Carotene. These substances help prevent our body from producing free radicals. They could be found in vegetable such as carrots, spinach, and bell pepper. Fiber also helps raising antibody system to function more properly. In addition, consumption of food with a mixture of ingredients also proposes lower risks to cancer.

Furthermore, food with fat and salt should be paid attention to. It is said that breast cancer, intestinal cancer, and ovary cancer are found related and connected to having too much fat. Having too much salty food is another factor of gastric cancer.

Beware of the Food You Eat

The ingredients of the food you eat may not be composed of cancer stimulant, but its condition may be the cause of cancer. Hot food, for instance, is a major cause of gastric ulcers, which leads to gastric cancer.

The food that is too burned is also another precaution, especially the burnt area is an obvious cause of cancer. Using too high temperature and spending too much time on it, cancer risk is also higher.

In addition, when eating leftover or overnight food, be careful of fungi. In food that is composed of beans, corn, bread, and Mochi can all lead to cancer.

Drinking at Appropriate Amount, No Smoking

Drinking and smoking is a cause of cancer. It is recognized that drinking too much alcohol is so much relevant to liver cancer, oral cancer, throat cancer, and digestive cancer. Drinkers are not using eating anything at the same time, causing insufficient nutrient to the body and lose body balance.

In the 12 Rules to Prevent Cancer, smoking is the most particular precaution. There are 20 types of cancer stimulant in cigarette smoke. The younger smoker is found riskier. Smoking 10 years in a row will lead to cancer more than non-smokers 30-50%.

Check How You Live

Being in the sun too much will allow ultraviolet ray to destroy cell DNA, which enable you to skin cancer more easily. Especially in the case of the sun burn will have to take the precaution seriously.

Appropriate amount of exercise and physical cleanliness are the options to immune system empowerment. Exercise keeps our body fit, and antibody system strong. Moreover, it is also relaxing to exercise.

When our body faces stress for a long time, our body will produce oxidative stress, and the antibody will decrease. We thus should find ways to relax and stay away from stress, such as hobbies, or hot tub bath. It is highly recommended to have our body and mind relaxed at least once a day.

References

Learning Antibody in 1 day: Basic Clinical Medicine (3rd Edition)

Antibody System: An Amazing System

Antibody System Tissue Commanded by Intestine

Illustration of Antibody System (2nd Edition)

Nutrients and Antibody

Physical Chart

Physical System and Functions

Disease Chart (New Edition)

Charms of Beta-glucan

Cancer Pamphlet

Modern Medical Science Approach – 9 Types of Sugar

Dictionary of Medical Terminology

Every human being has cancer cell in their body. Most people don't even know they have cancer cells because their immune system safely and easily kills their cancer cells as they form. As long as there is a balance between the number of new cancer cells in their body, and the strength of their immune system, they will never get "CANCER".